

中樞神經系統疾病別統計分析 (98.01.01-- 98.12.31) (莊豪文醫師整

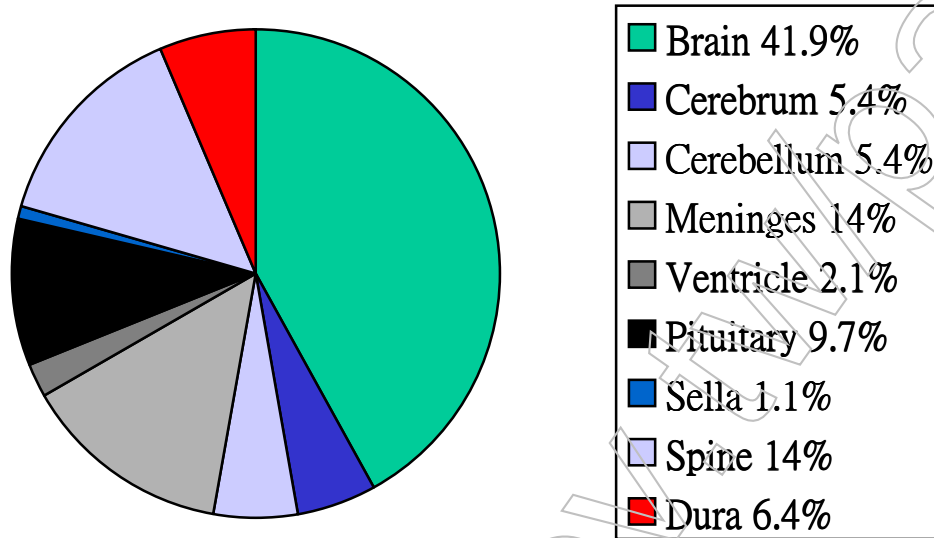
理)

1. 同一病人同一診斷，不同位置描述，以診斷及位置描述最清楚精確、確診或位置描述是放在敘述第一字的為主。
2. 同一病人多個診斷，但診斷相關，取主病灶確定診斷者。
3. 同一病人多個診斷，有良性及惡性，取惡性為主要診斷。
4. 不是 CNS 系統，只是位置附近的 **soft tissue**、**bone marrow** 者的診斷去除，**frozen** 的診斷重覆部分也去除。
5. 診斷中有描述到相關內容的也放到該診斷，即便未確診。

位置別	病例數	佔百分比%
<b>Brain</b>	39	41.9
<b>Cerebrum</b>	5	5.4
<b>Cerebellum</b>	5	5.4
<b>Meninges</b>	13	14
<b>Ventricle</b>	2	2.1
<b>Pituitary</b>	9	9.7
<b>Sella</b>	1	1.1
<b>Spine</b>	13	14
<b>Dura</b>	6	6.4

共 93 例

圖表1：各Location之比例



98 年度中樞神經系統疾病別統計分析 (Entity)

(98.01.01—98.12.31 )

疾病別	病例數	佔百分比 %	
Gliososis(GLI)	1	1.07%	
Glioma (GL)	Pilocytic astrocytoma	2	2.15%
	Diffuse astrocytoma	5	5.38%
	Anaplastic astrocytoma	2	2.15%
	Glioblastoma	6	6.45%
	Oligodendroglioma	1	1.07%
	Anaplastic oligodendroglioma	0	0

	Anaplastic oligoastrocytoma	0	0
	Ependymoma	0	0
Meningioma (MEN)	Meningioma	26	28%
	Atypical meningioma	3	3.22%
	Meningioma, meningotheliomatous type with rhabdoid feature	1	1.07%
	Anaplastic meningioma	1	1.07%
Atypical choroid plexus papilloma (ACPP)		0	0
Chordoma (CH)		1	1.07%
Malignant lymphoma (ML)		3	3.22%
Plasmacytoma (PL)		1	1.07%
Germinoma (GE)		0	0
Hemangioblastoma (HB)		2	2.15%
Hemangiopericytoma (HP)		1	1.07%
Secondary tumor (SEC)		10	10.8%
Schwannoma (SW)		0	0
Neurofibroma (NF)		0	0
Pituitary adenoma (PA)		9	9.68%
Atypical prolactin producing adenoma (APPA)		1	1.07%
Ectopic pituitary adenoma (EPA)		1	1.07%
Malignant spindle cell tumor, compatible with malignancy in giant cell tumor (MSCT)		1	1.07%
Ewing sarcoma/PNET		1	1.07%

Non-tumor benign lesion (NTBL)		
Abscess (ABS)	3	3.22%
Amyloid angiopathy (AA)	0	0
Cavernous angioma (CA)	1	1.07%
Cerebral hemorrhage (CE)	1	1.07%
Cryptococcus infection (CI)	1	1.07%
Degenerative fibrocartilage (DF)	5	5.38%
Epidermal cyst (EIC)	1	1.07%
Granuloma (GR)	0	0
Hematoma (HE)	4	4.30%
Suppurative inflammation (SI)	1	1.07%
Thrombus(TS)	1	1.07%
Traumatic inclusion cyst (TIC)	0	0
Vascular malformation (VM)	1	1.07%

共 93 例

圖表二：各疾病類別的比例

