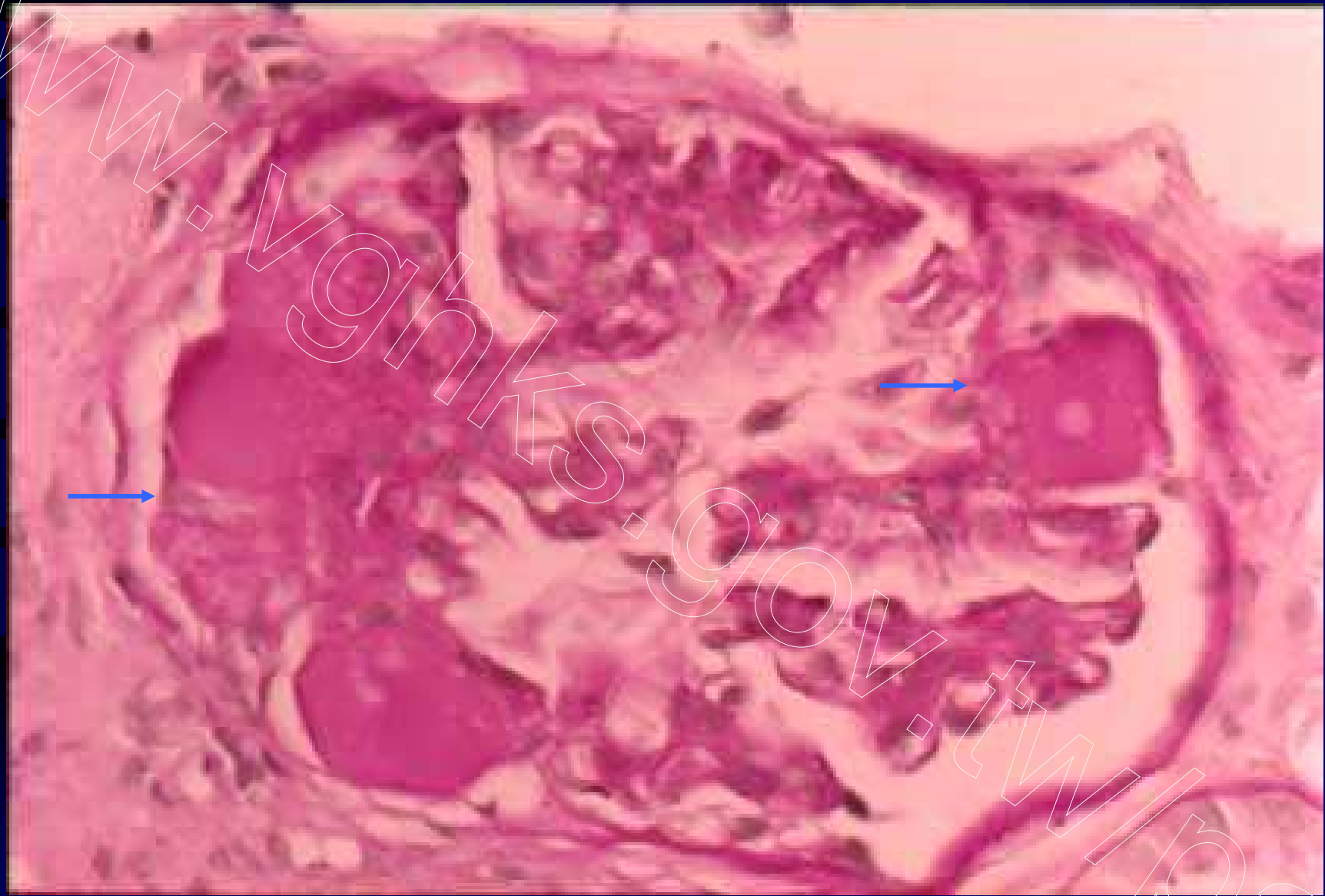


**Fig 31. Focal segmental glomerulosclerosis and hyalinosis,
H&E**



**Fig 32. Focal segmental glomerulosclerosis and hyalinosis,
PAS**



Fig 33. Membranous glomerulonephritis (GN), H&E, thick glomerular capillary wall



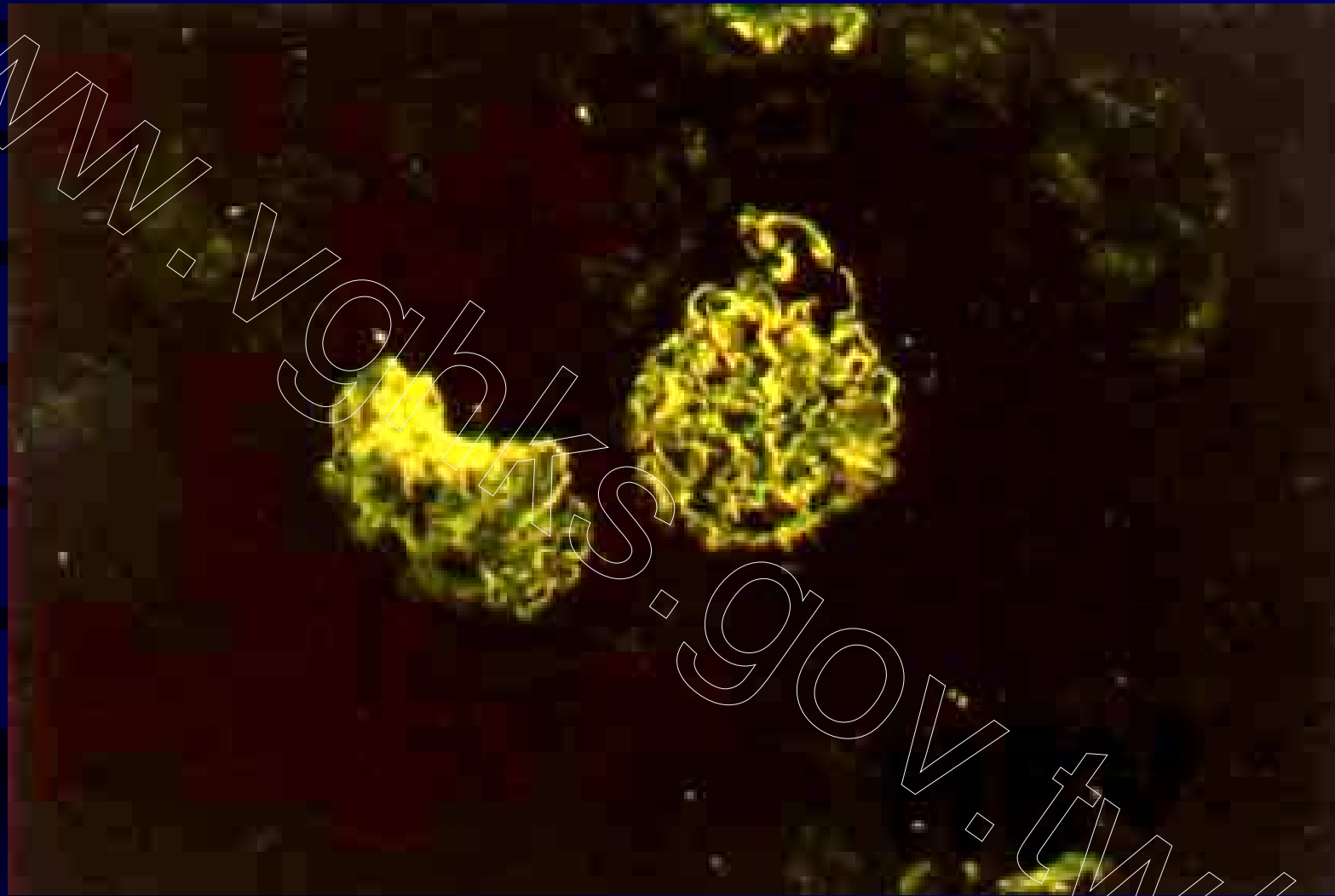
Fig 34. Membranous GN, stage 1, vacuoles in tangentially cut glomerular basement membrane, PASM



Fig 35. Membranous GN, stage 2, spikes on glomerular basement membrane, PASM



Fig 36. Membranous GN, IgG, IF, granular capillary wall pattern



**Fig 37. Hepatitis B virus-associated membranous GN,
HBsAg, IF, granular capillary wall pattern**



Fig 38. Membranous GN in congenital syphilis, IgG, IF, granular capillary wall pattern

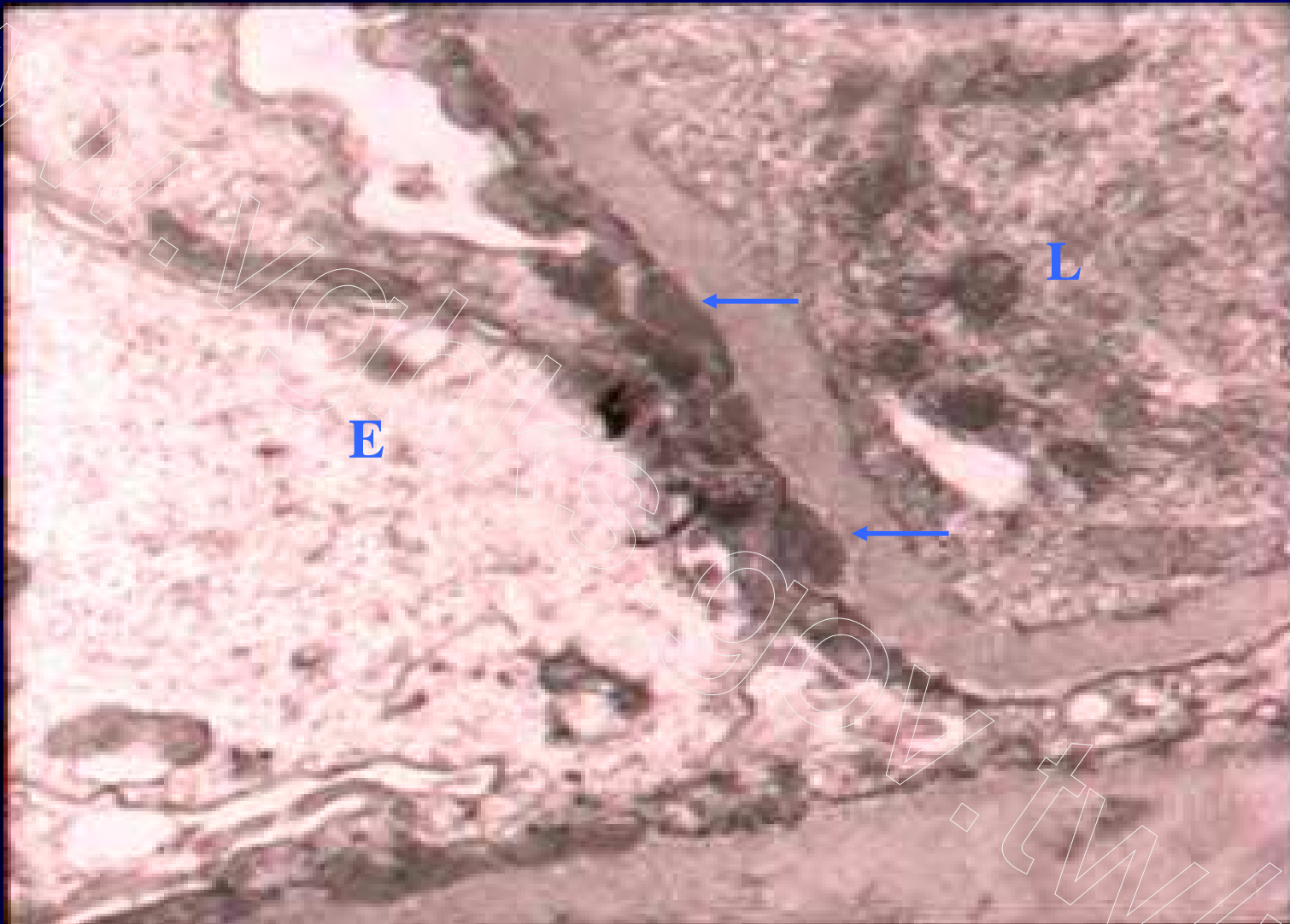


Fig 39. Membranous GN, stage 1, TEM, subepithelial deposits

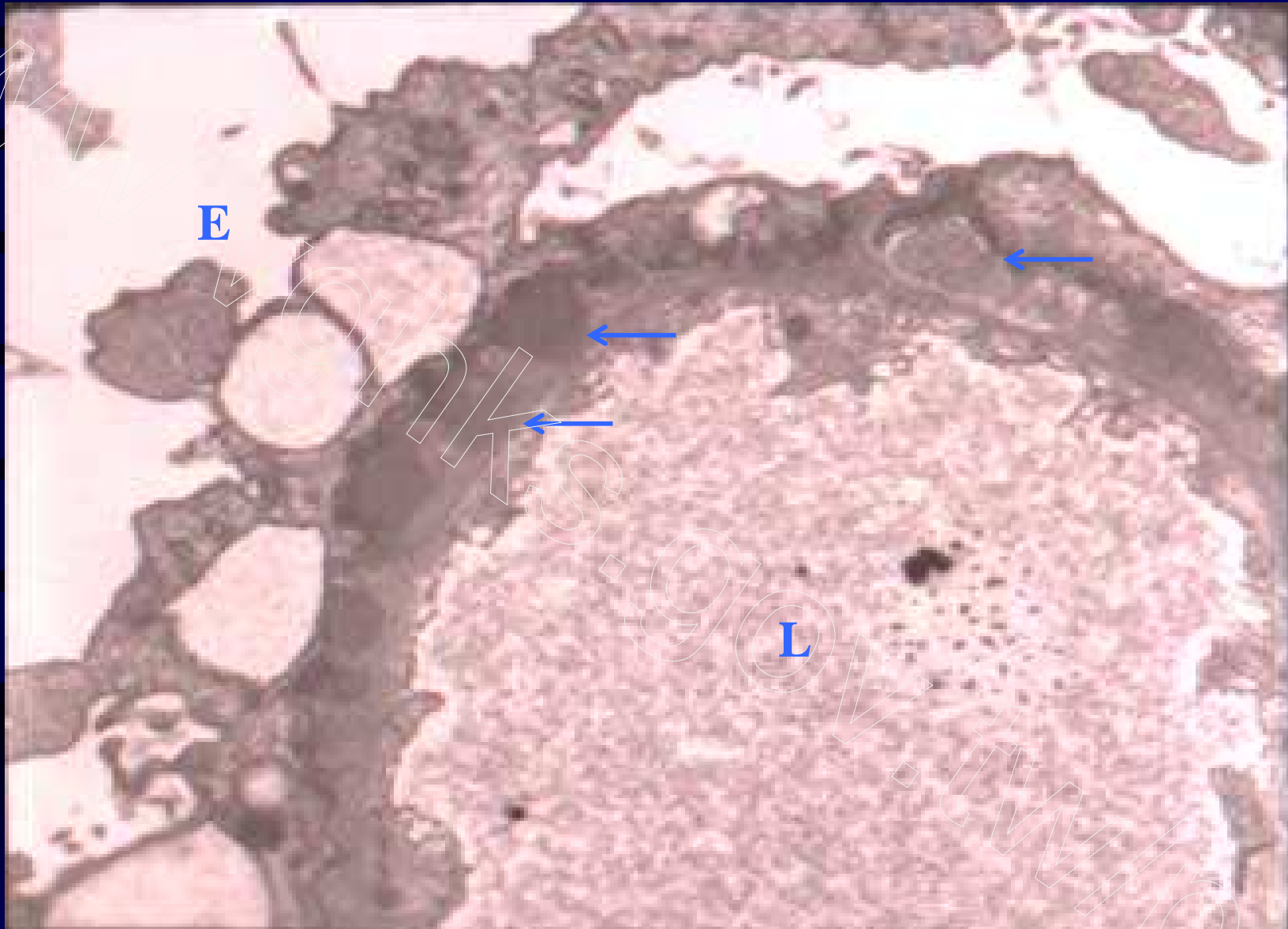


Fig 40. Membranous GN, stage 2, subepithelial deposits with spike formation of GBM, TEM