

Fig 41. Membranous GN, stage 3, TEM, subepithelial deposits with spike and chain-like formation of GBM

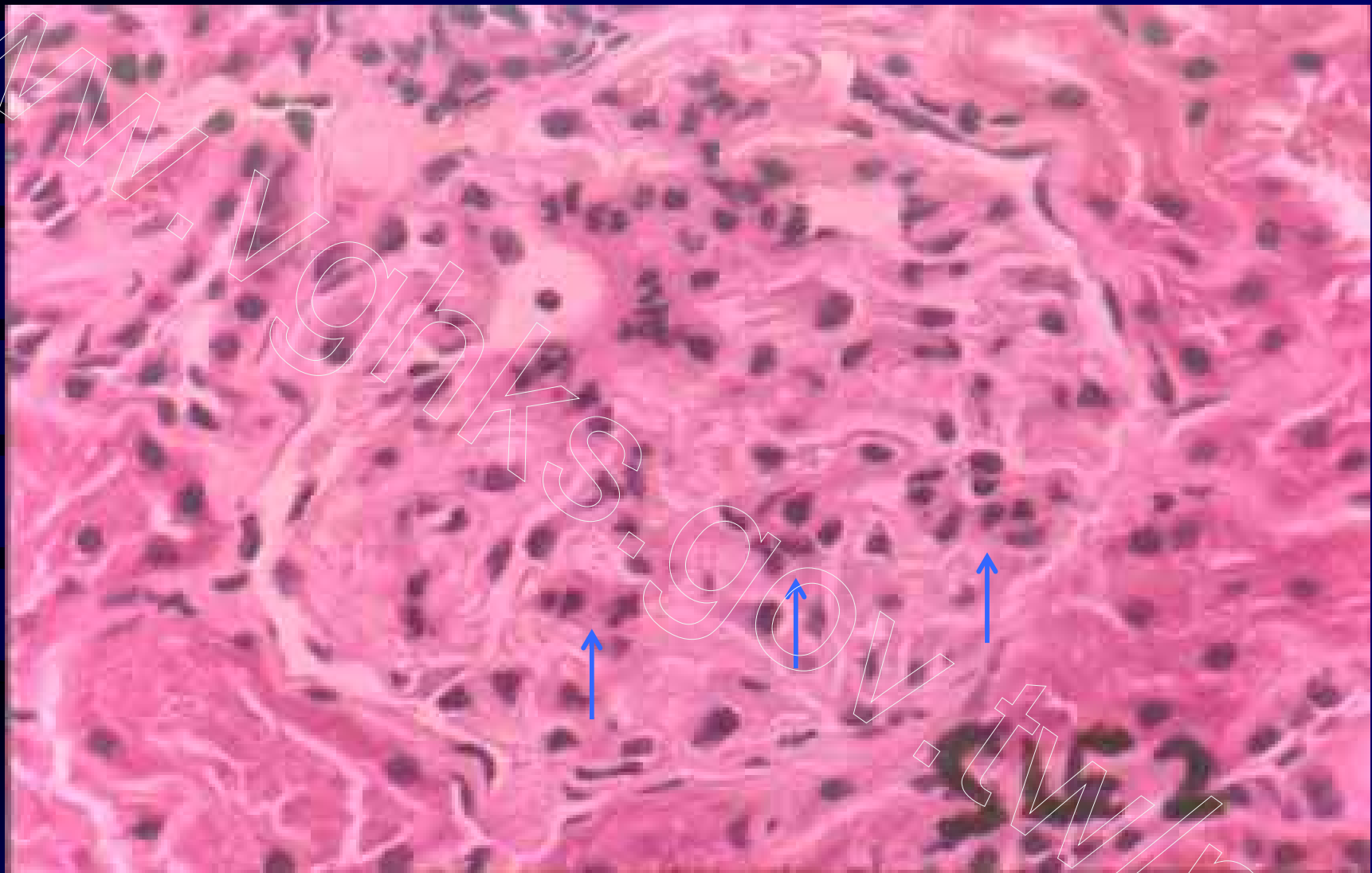


Fig 42. Lupus nephritis, class II, H&E, mild mesangial expansion and hypercellularity

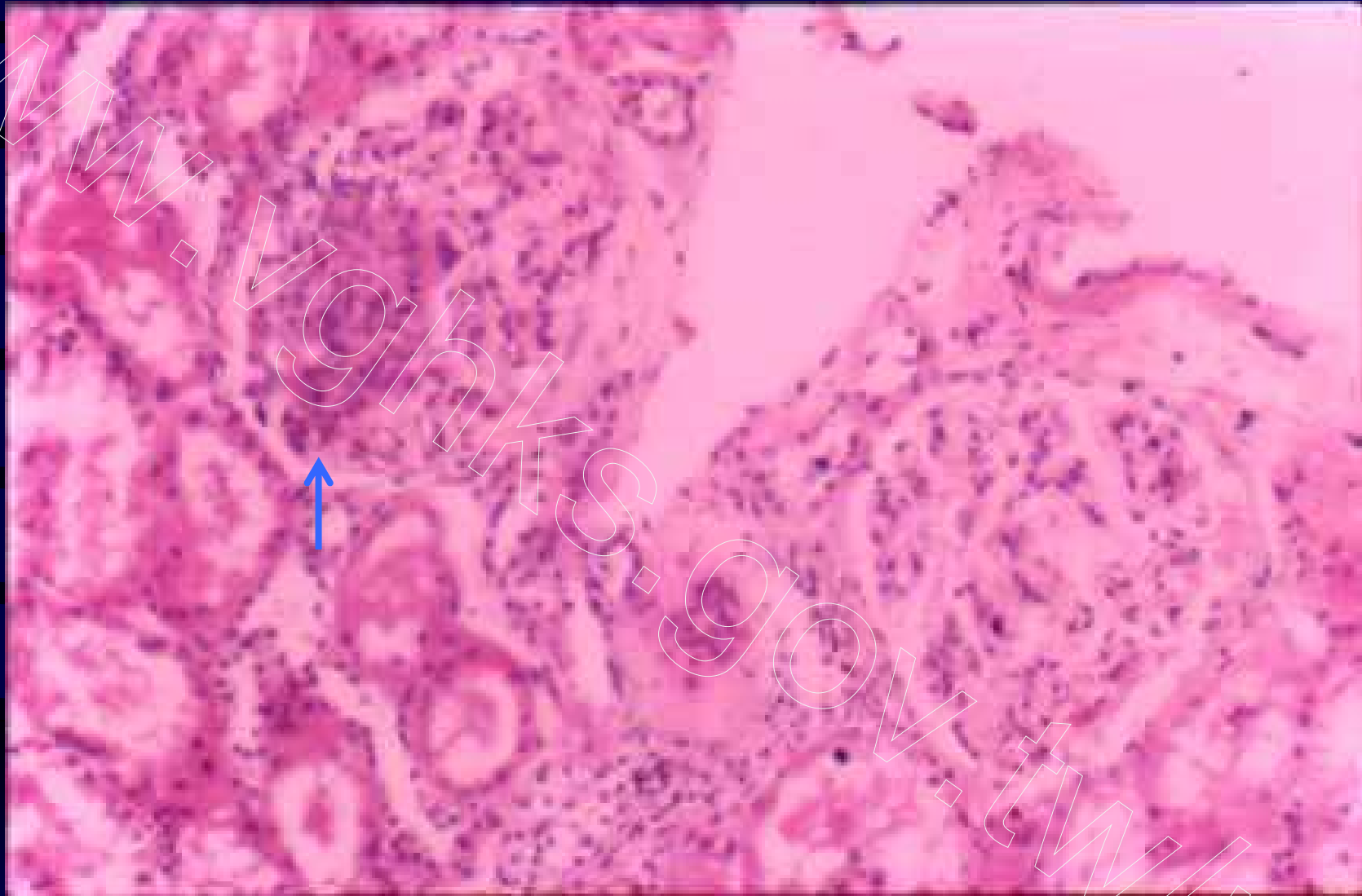


Fig 43. Lupus nephritis, class III, H&E, focal segmental endocapillary proliferation

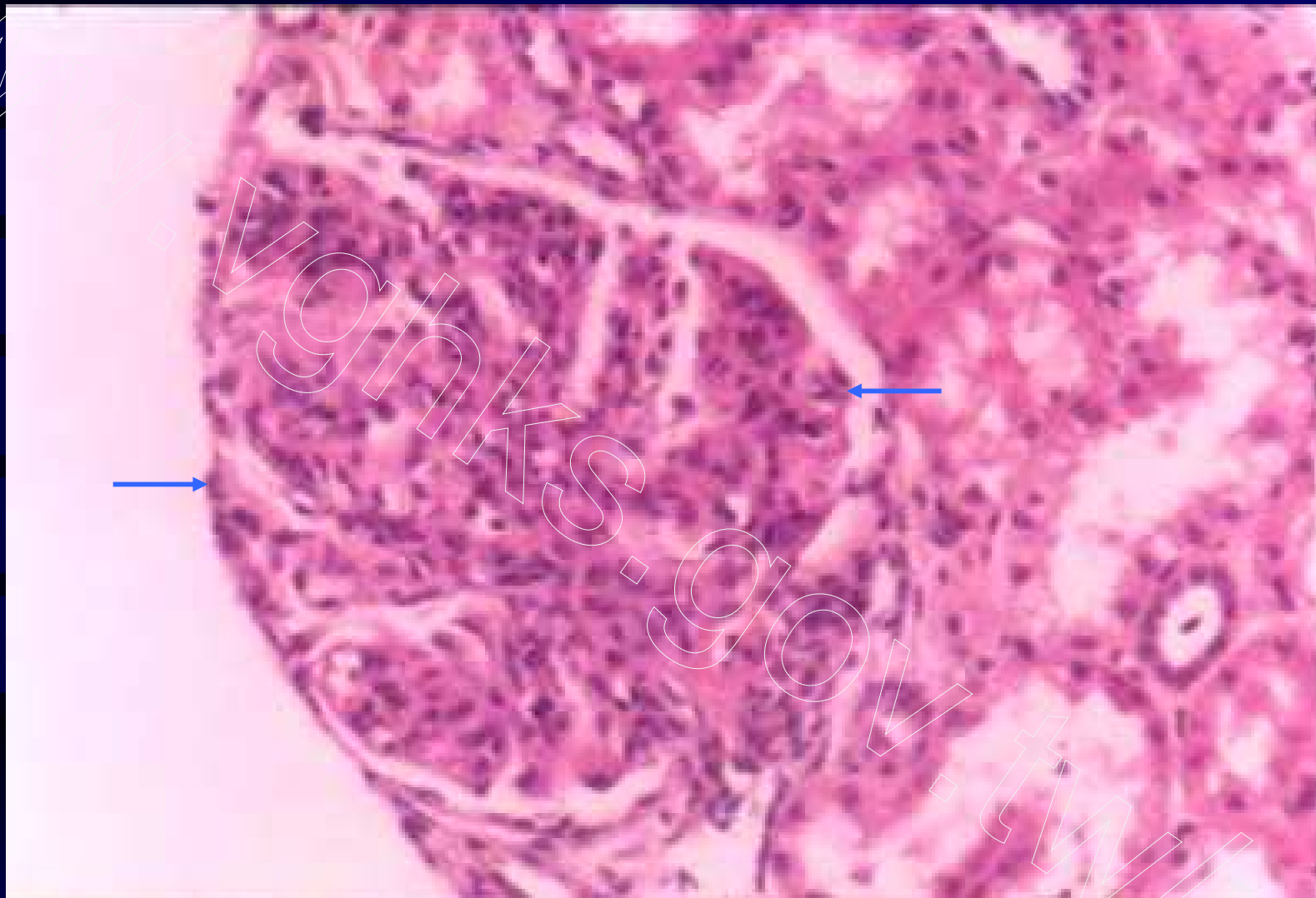


Fig 44. Lupus nephritis, class IV, H&E, global endocapillary proliferation

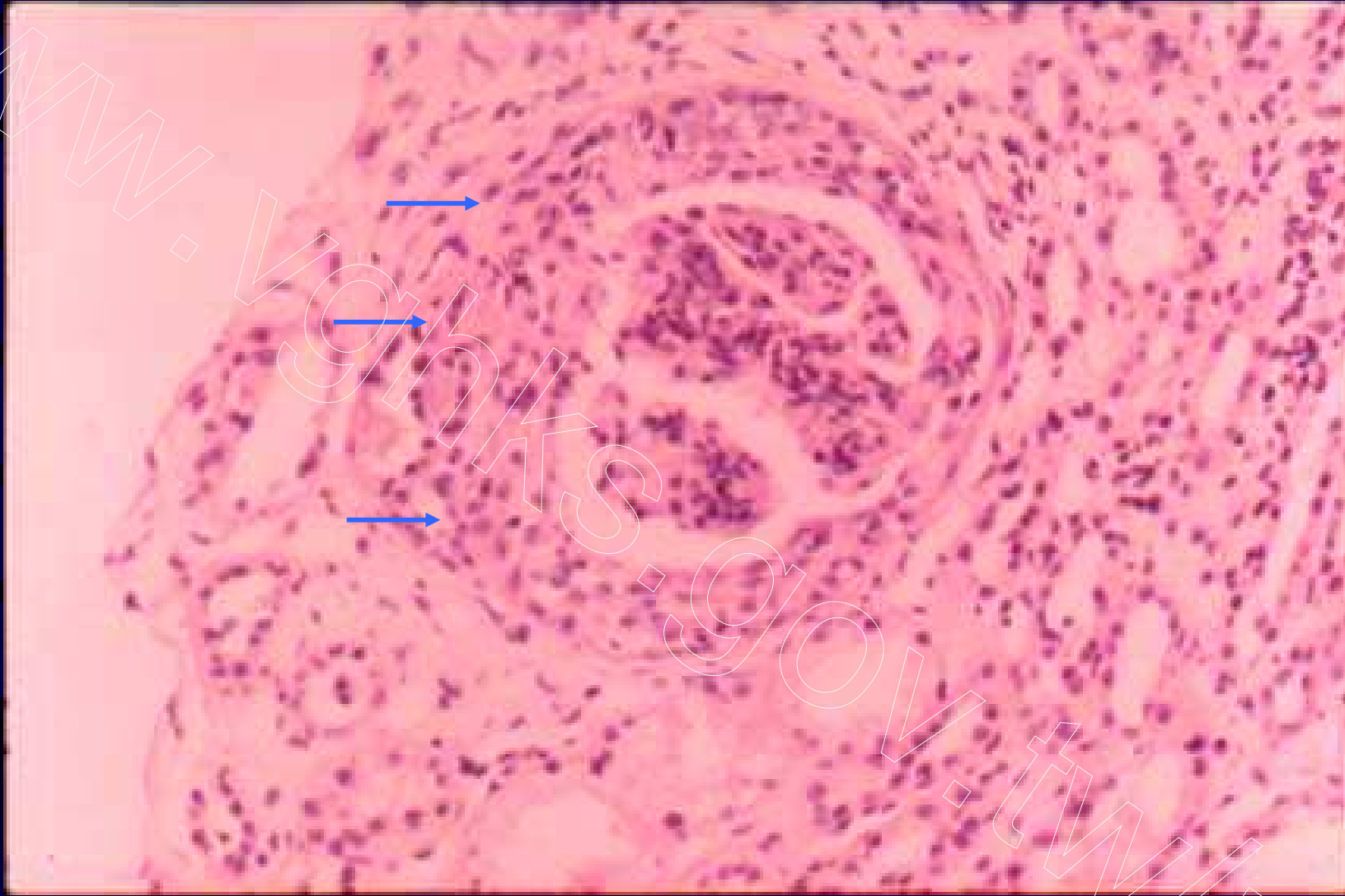


Fig 45. Lupus nephritis, class IV, with cellular crescent, H&E

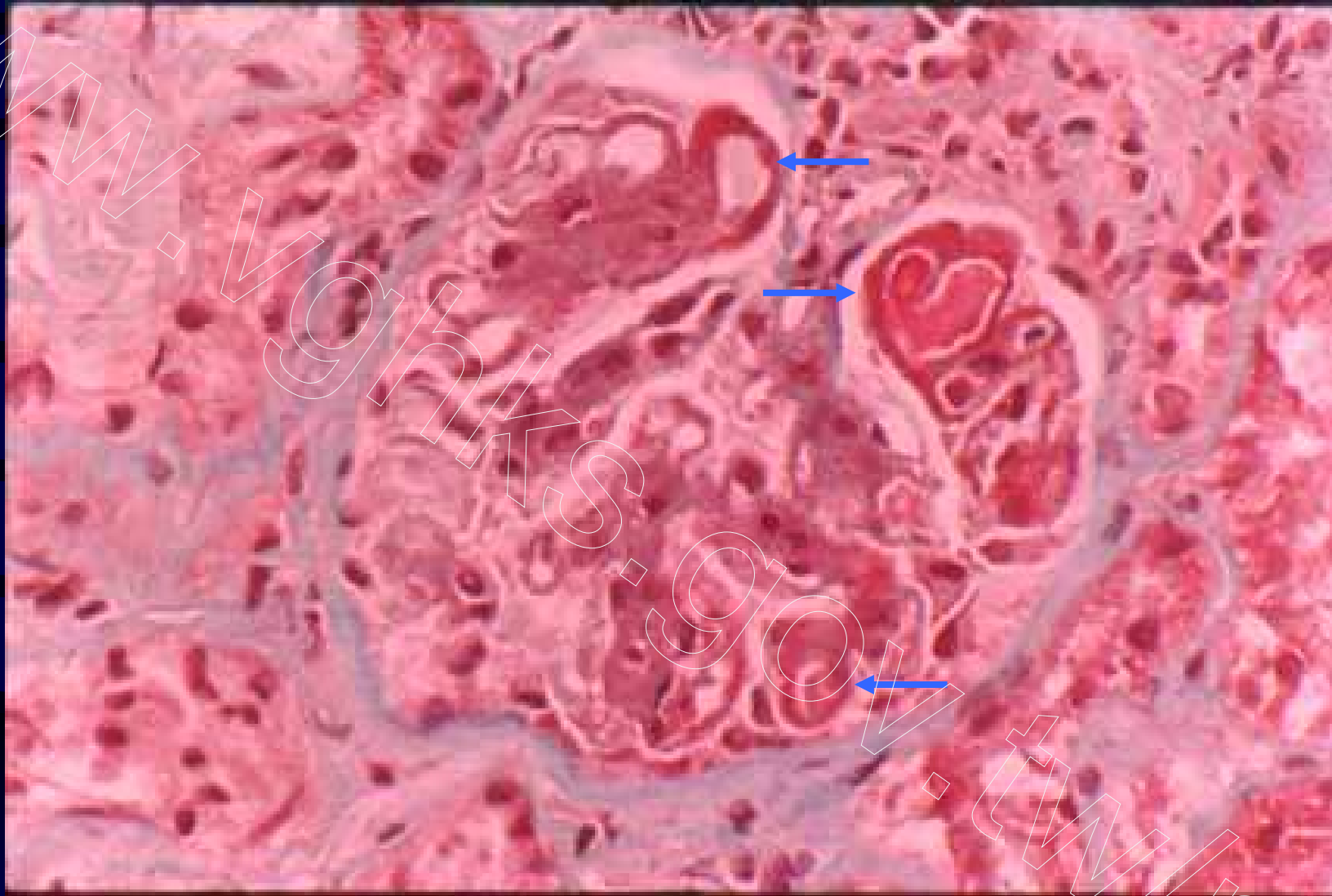


Fig 46. Lupus nephritis, class IV, with wire-loops, Masson trichrome

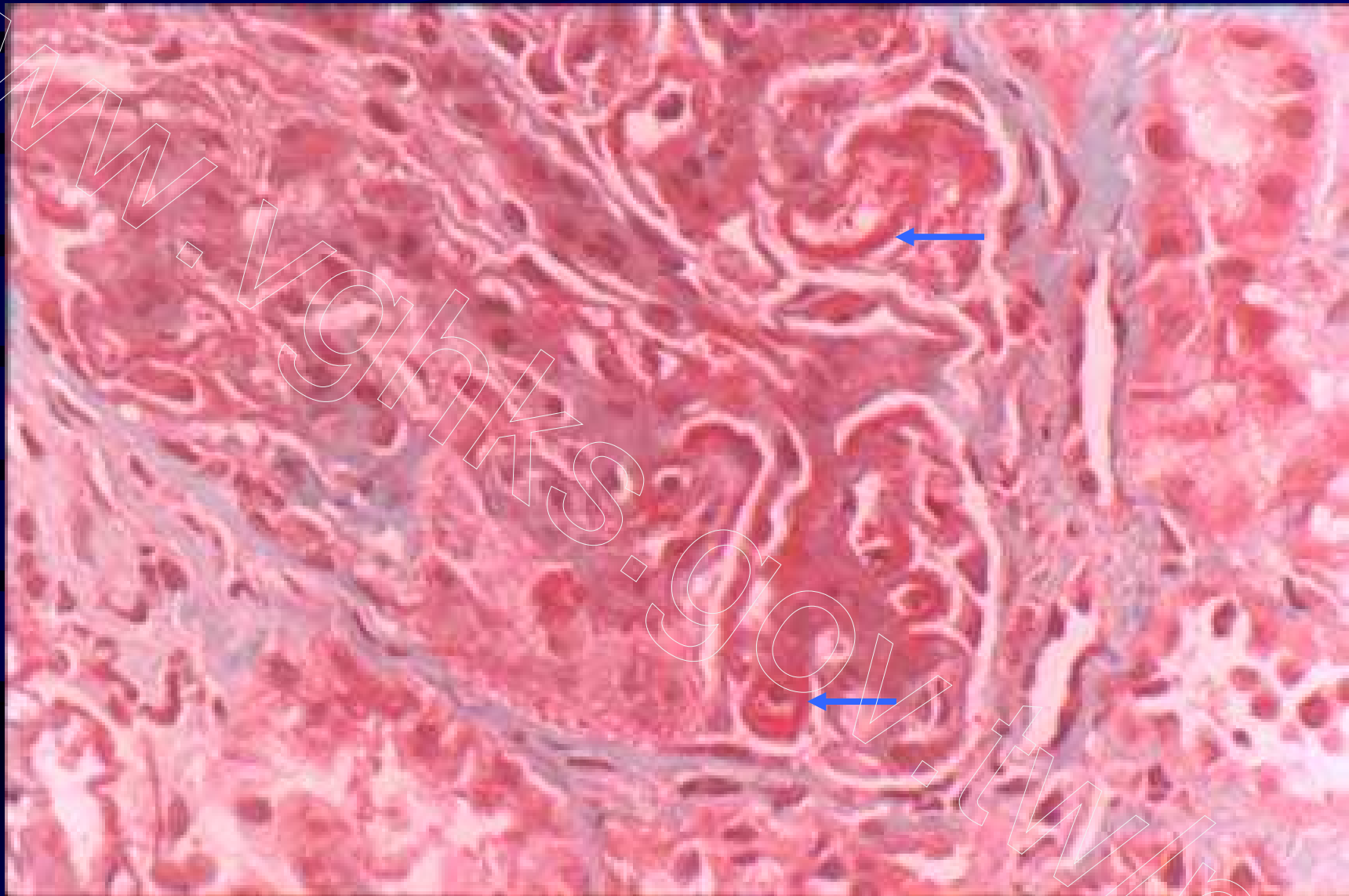


Fig 47. Lupus nephritis, class IV, with wireloops, Masson trichrome

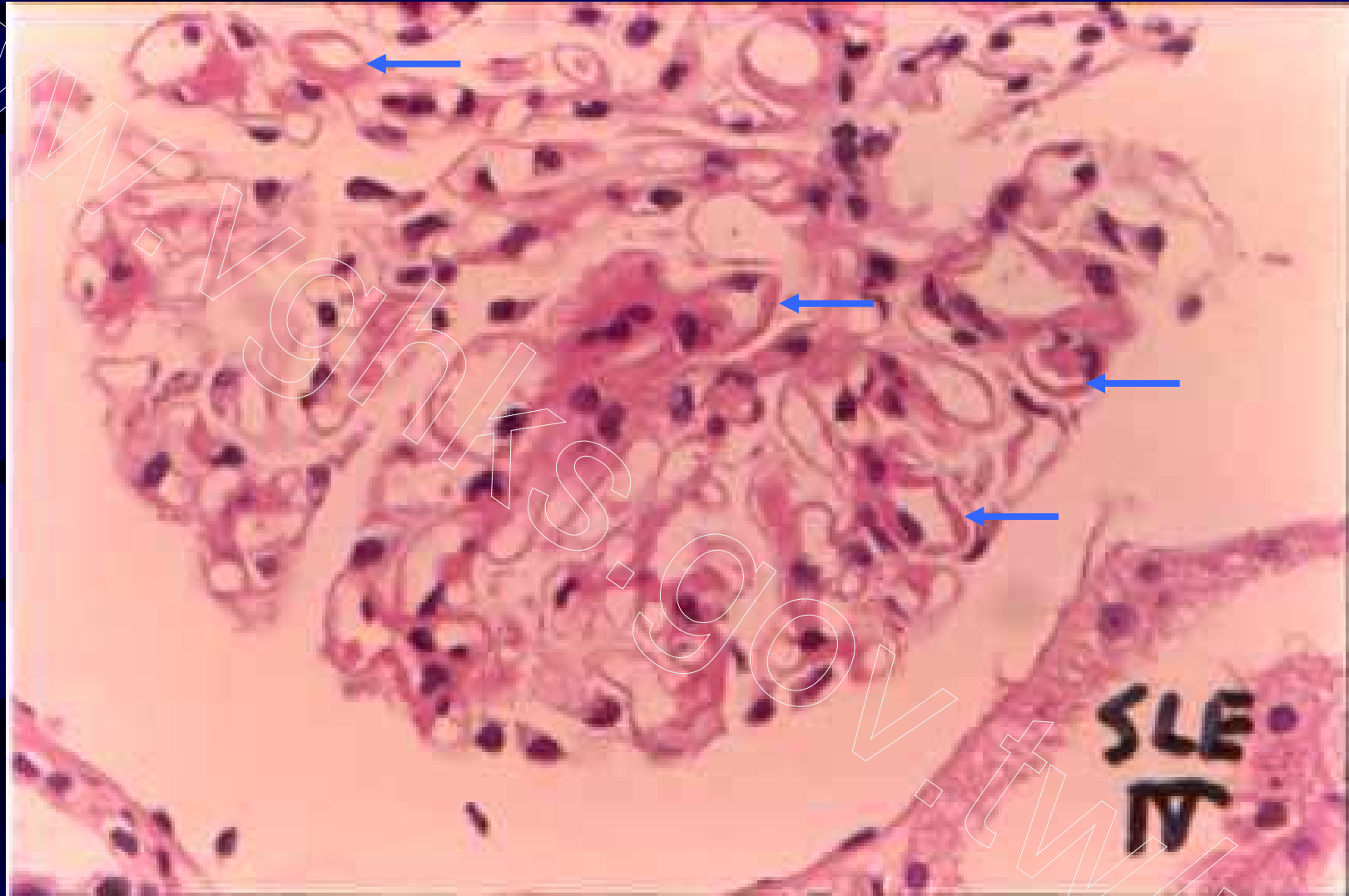


Fig 48. Lupus nephritis, class IV, extensive subendothelial deposits without hypercellularity, H&E

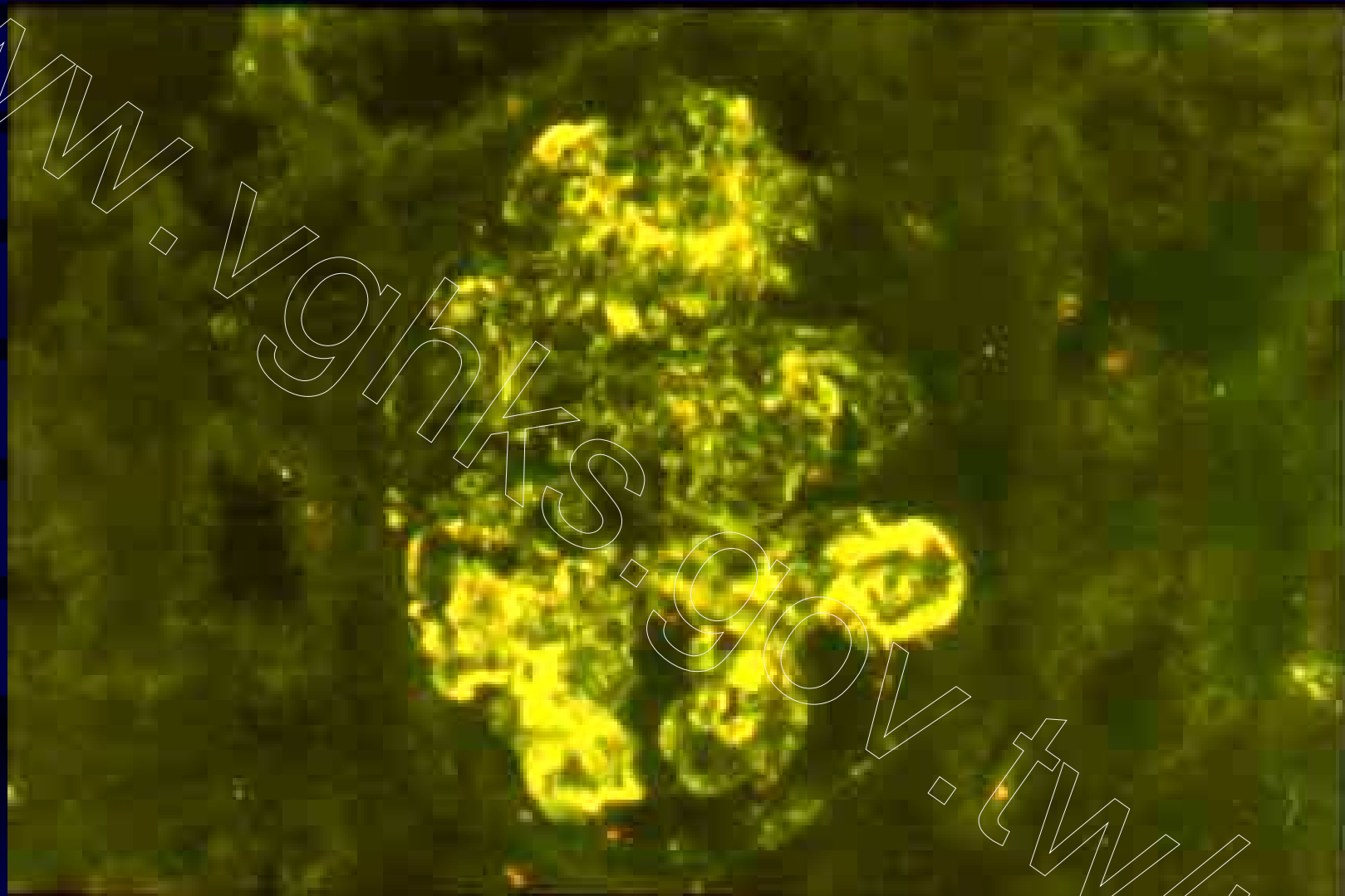


Fig 49. Lupus nephritis, class IV, IgG, granular capillary wall and mesangial pattern, IF



Fig 50. Lupus nephritis, class IV, massive subendothelial deposits, TEM