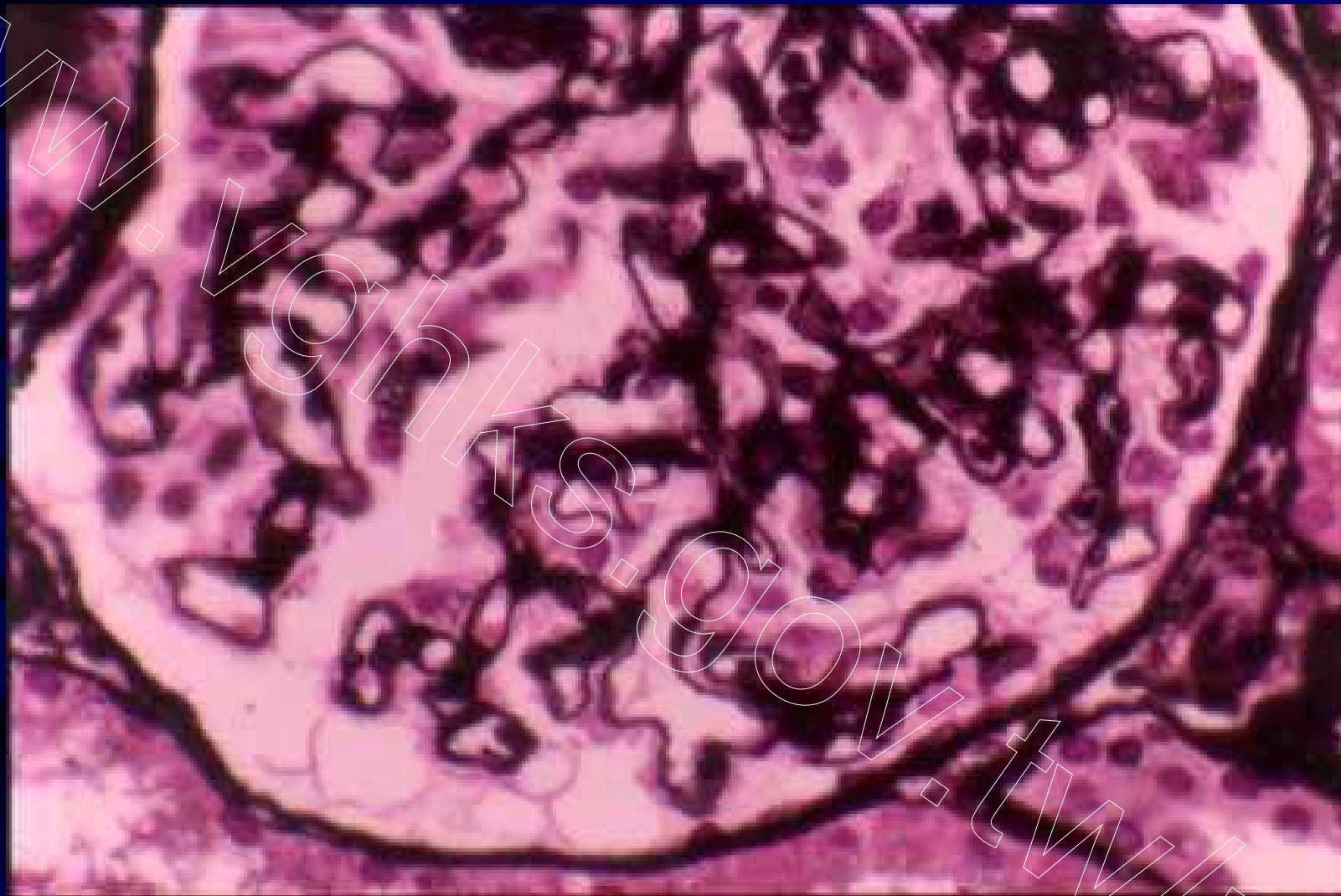
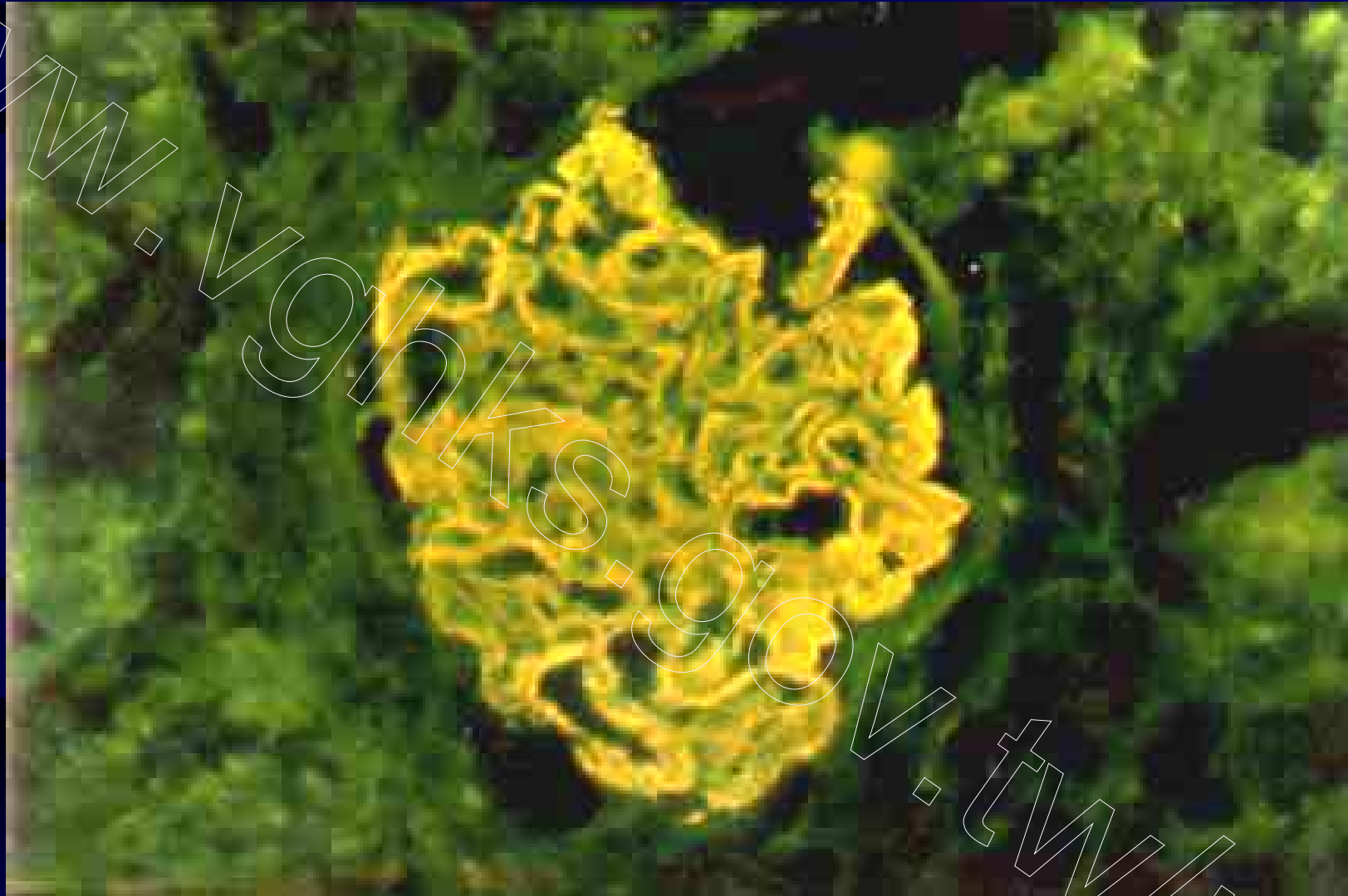


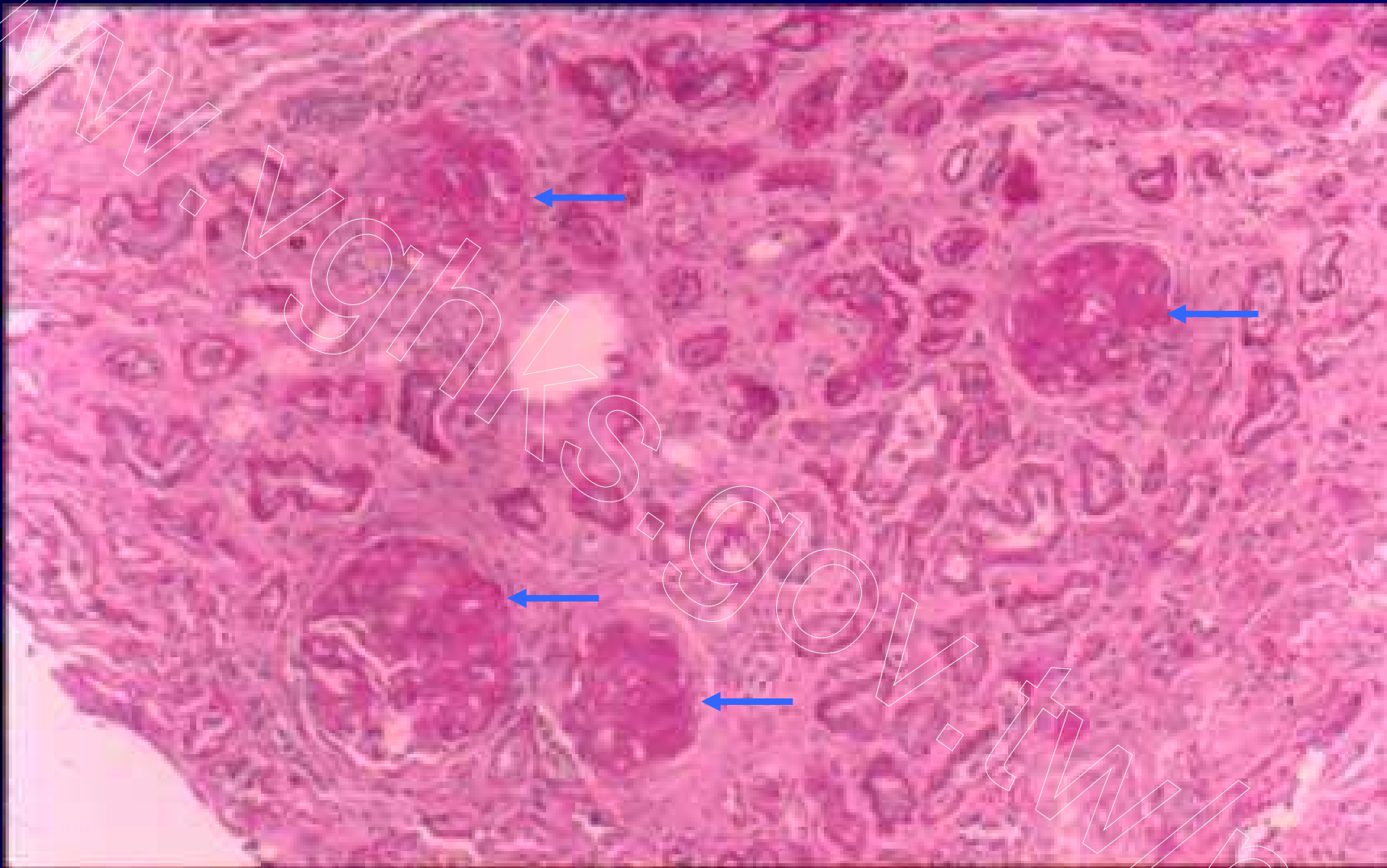
**Fig 51. Lupus nephritis, class V, thick glomerular capillary wall (membranous GN), H&E**



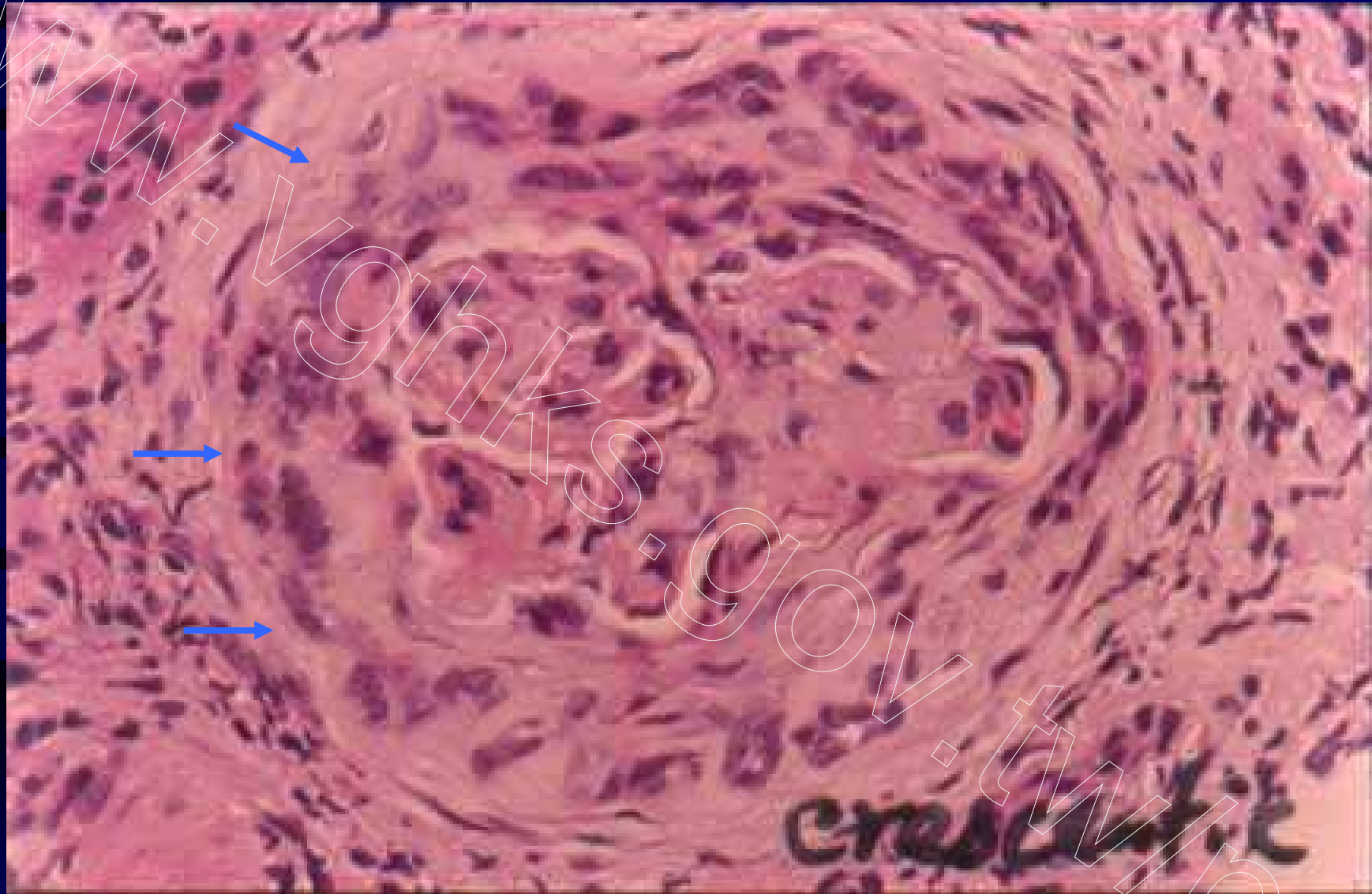
**Fig 52. Lupus nephritis, class V, spike formation of glomerular capillary wall, PASM**



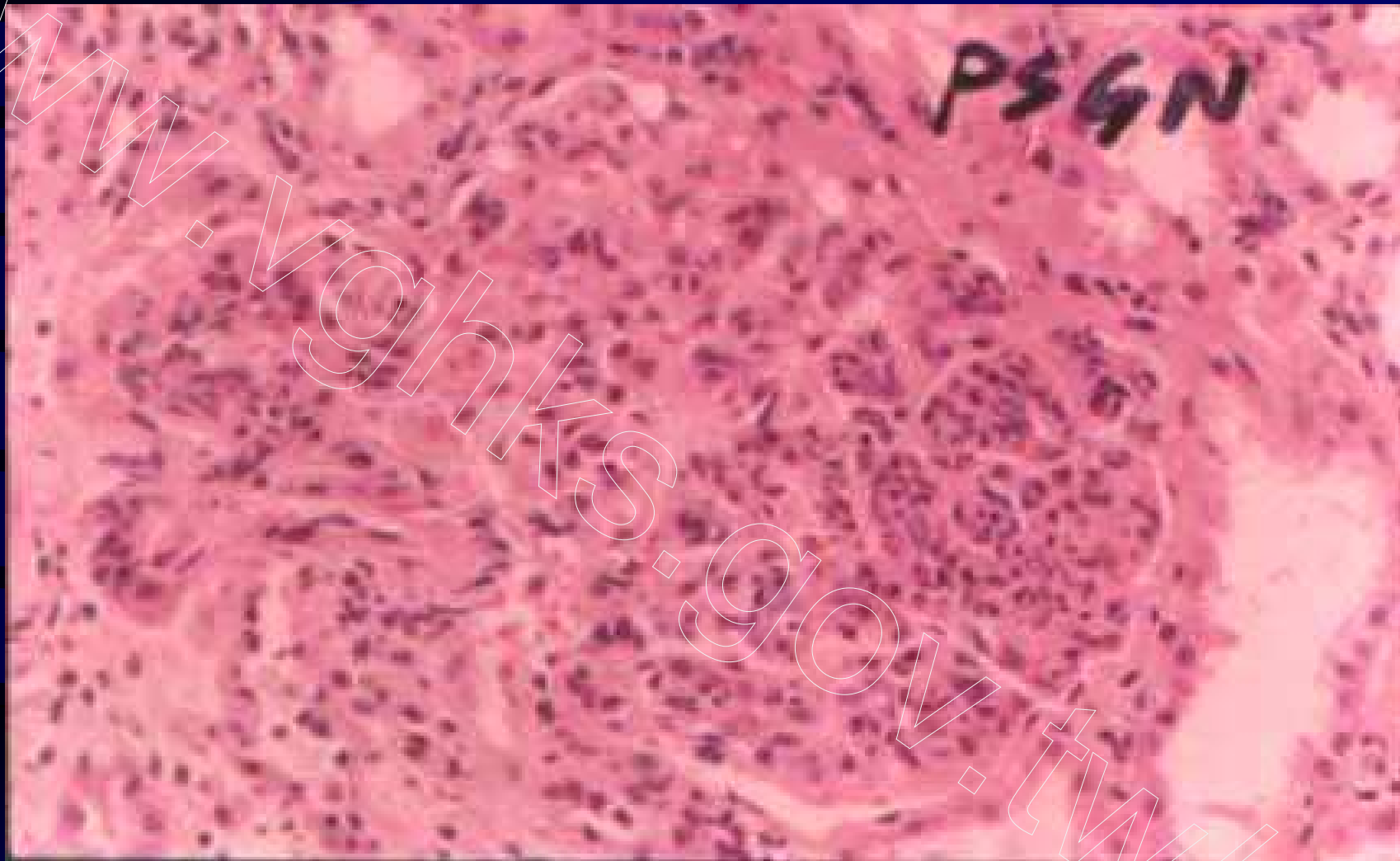
**Fig 53. Lupus nephritis, class V, granular capillary pattern,  
IF**



**Fig 54. Lupus nephritis, class VI, diffuse global sclerosis,  
PAS**



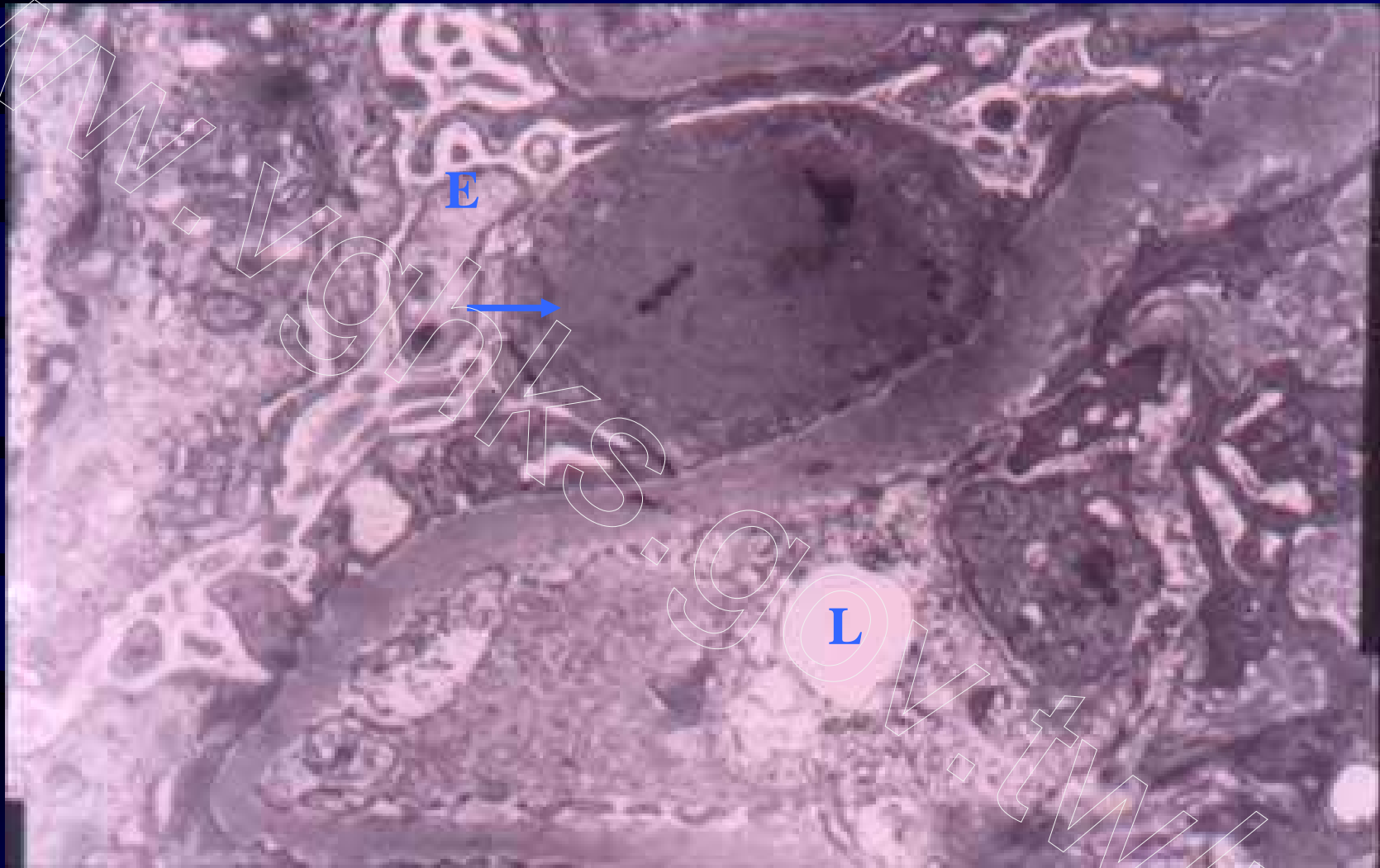
**Fig 55. Crescentic GN, fibrocellular crescent, H&E**



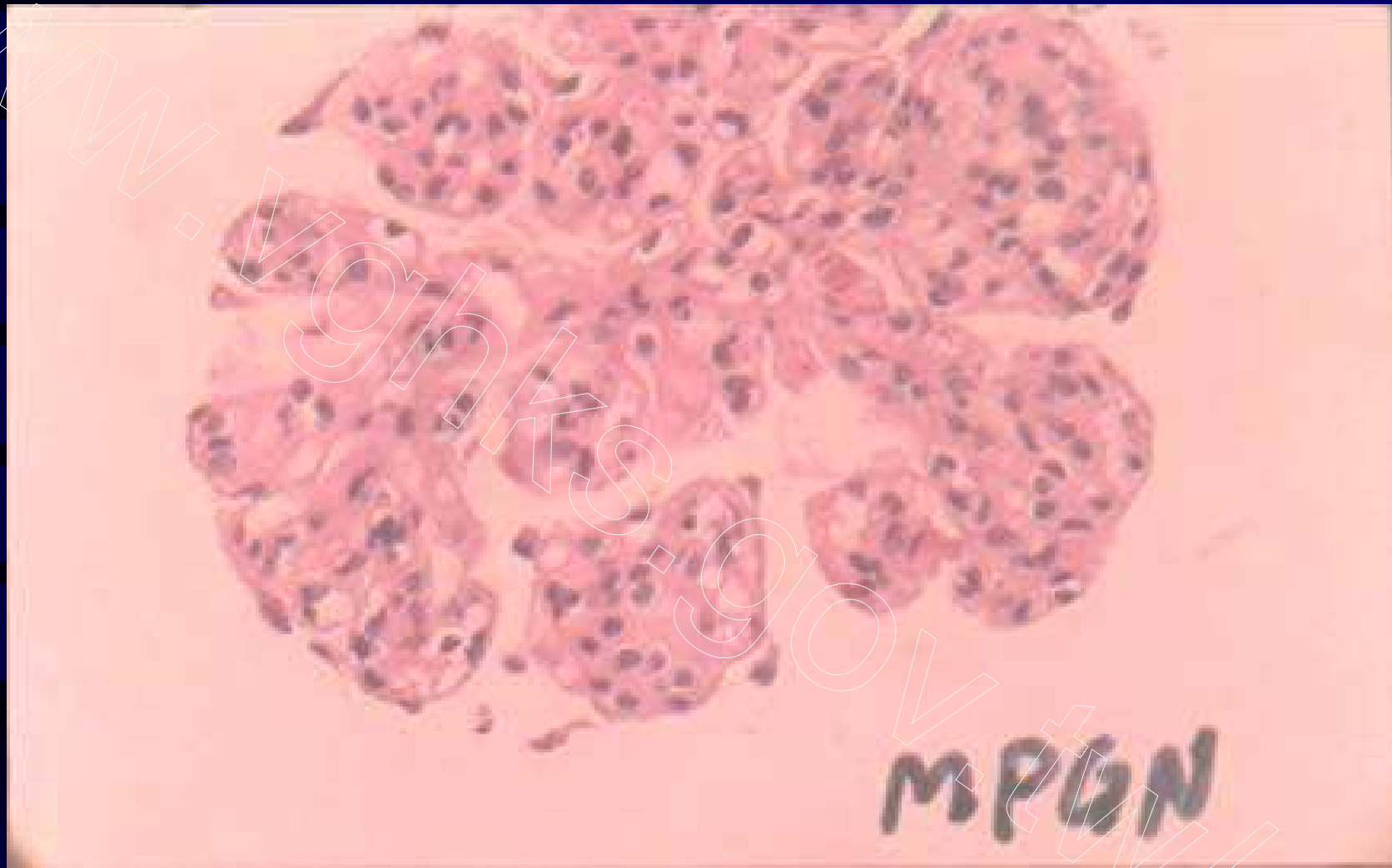
**Fig 56. Post-streptococcal GN, global hypercellularity with marked neutrophils infiltrate, H&E**



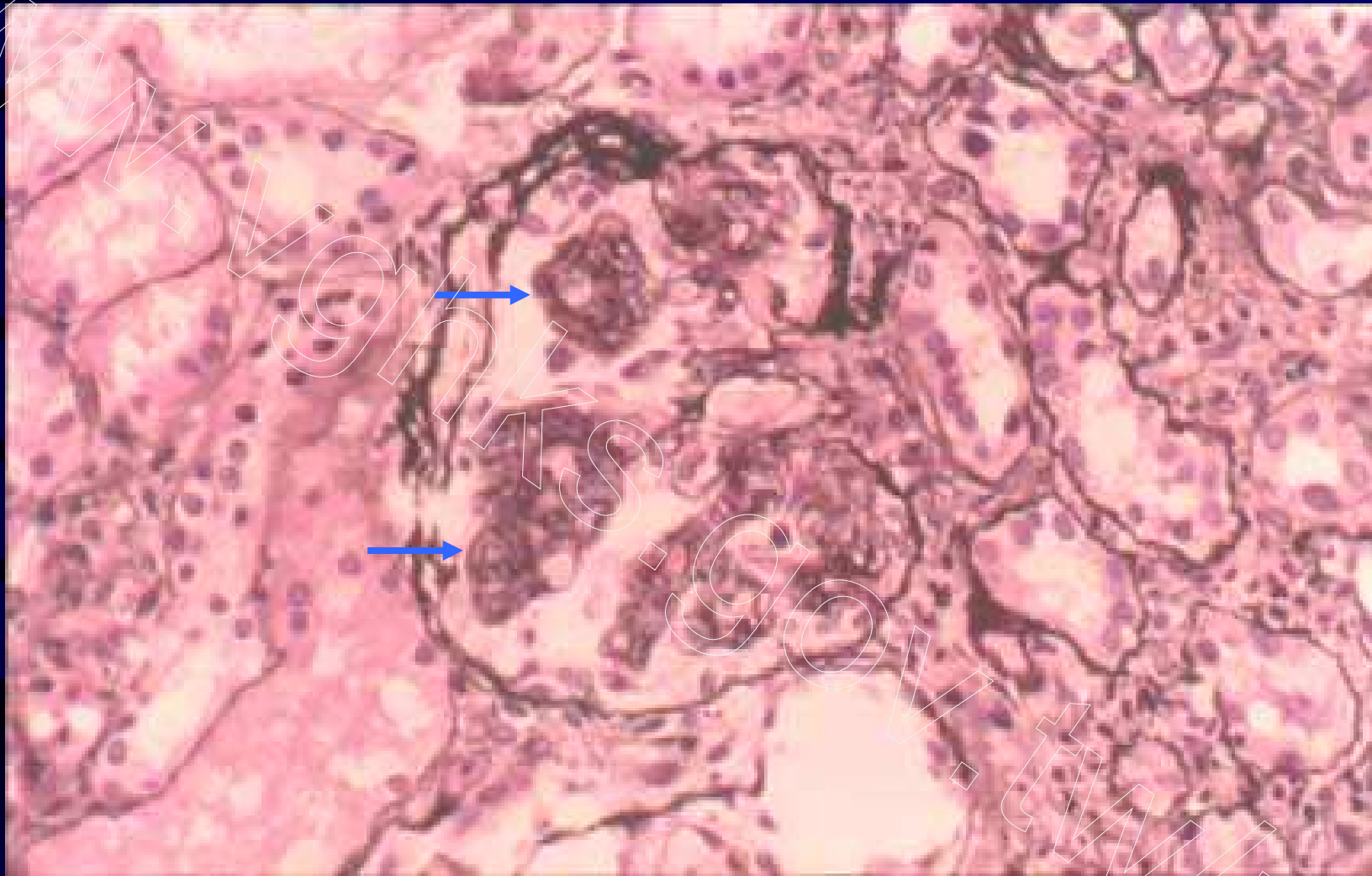
**Fig 57. Post-streptococcal GN, granular capillary pattern,  
IF**



**Fig 58. Post-streptococcal GN, subepithelial hump, TEM**



**Fig 59. Membranoproliferative GN, lobular accentuation,  
H&E**



**Fig 60. Membranoproliferative GN, double contour of glomerular capillary wall, PASM**