

Fig 91. Scleroderma, red blood cells in the thickened fibromyxoid intima, Masson trichrome

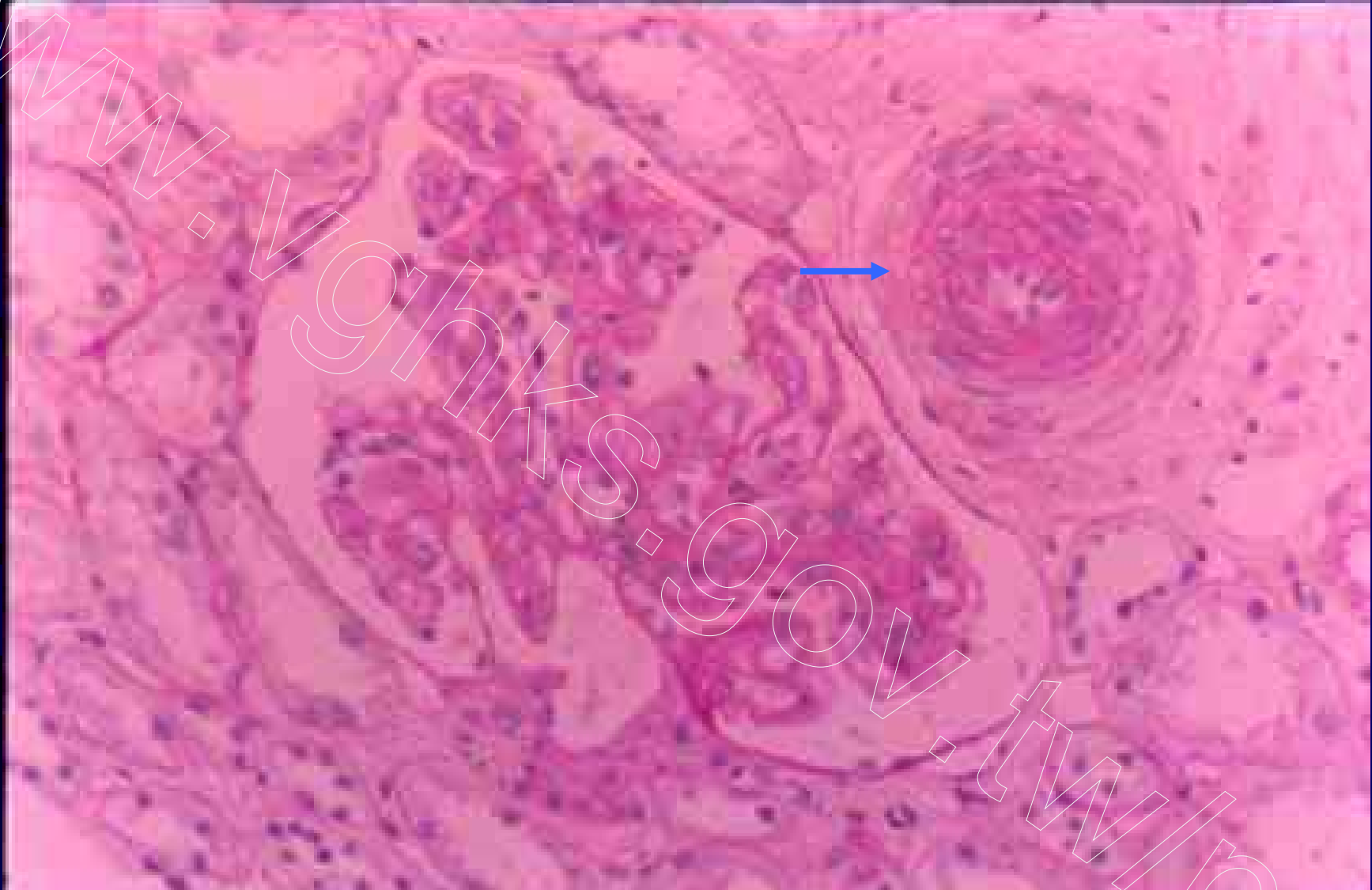


Fig 92. Thrombotic microangiopathy, onion-skin appearance of arteriole. PAS

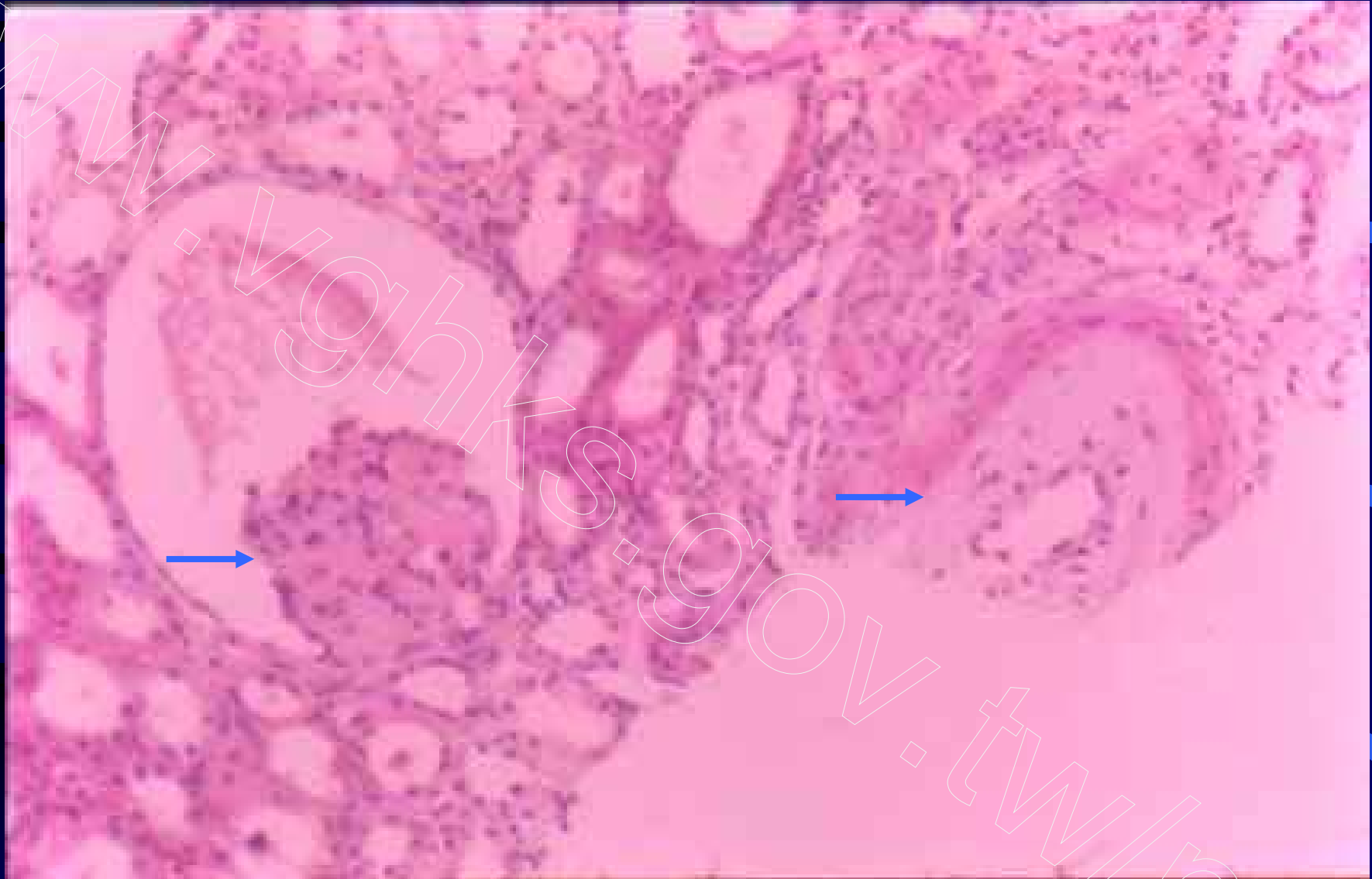


Fig 93. Thrombotic microangiopathy, fibromyxoid intimal thickening of artery and ischemic collapsed glomerulus. H&E

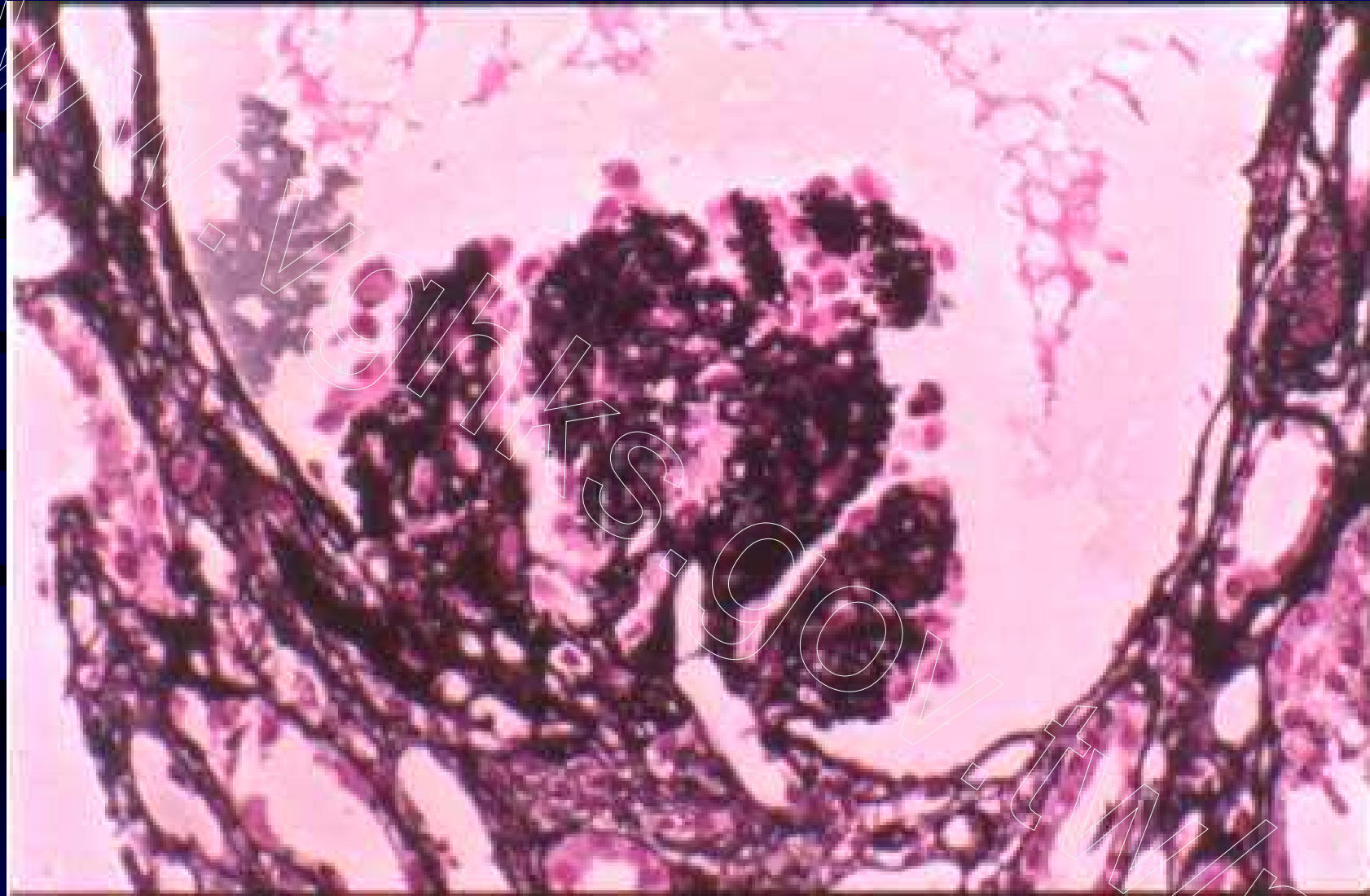


Fig 94. Thrombotic microangiopathy, ischemic collapsed with glomerular capillary wall wrinkling. PASM

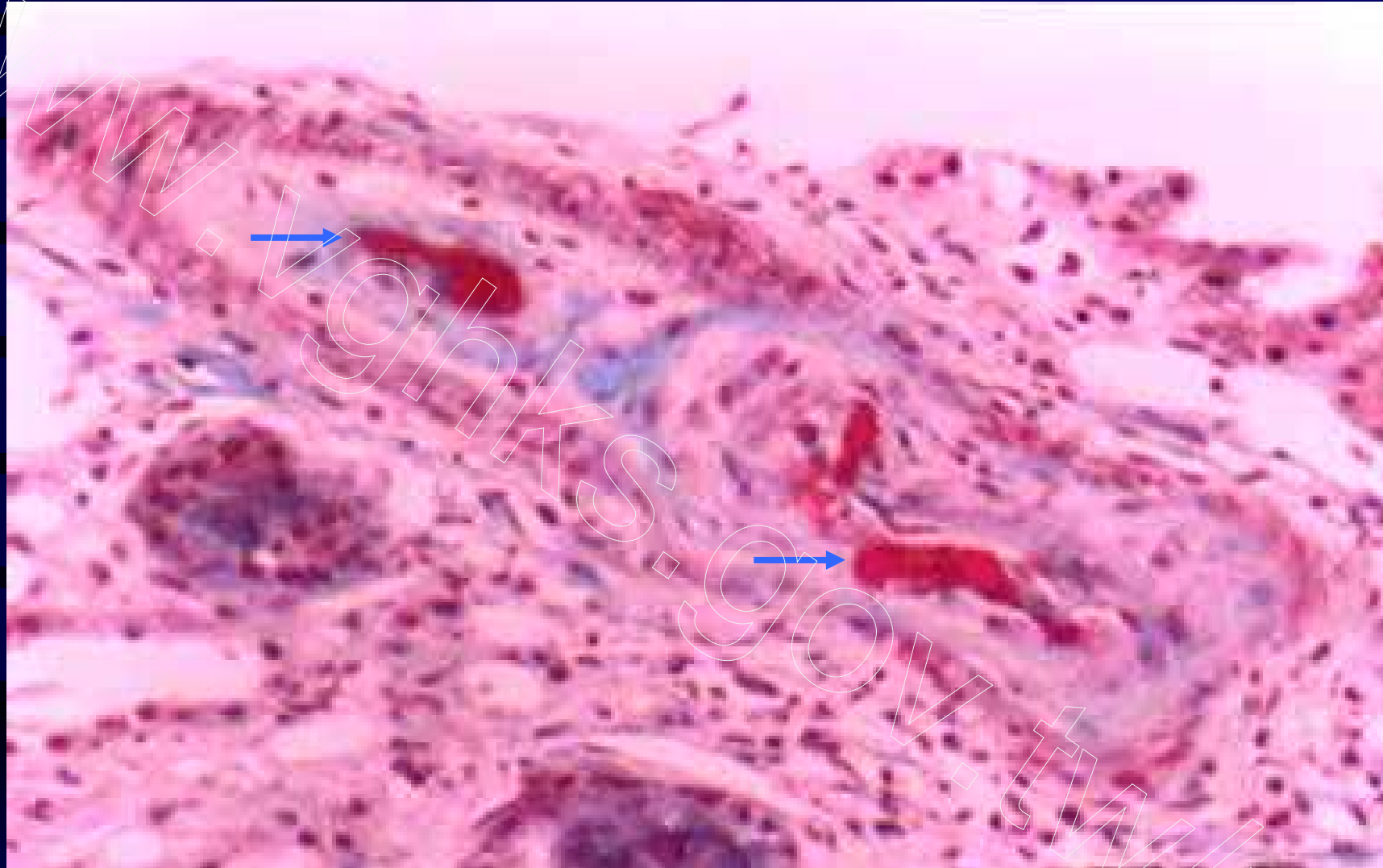


Fig 95. Thrombotic microangiopathy, arterial fibromyxoid intimal thickening with fibrinoid deposits. Masson trichrome



Fig 96. Thrombotic microangiopathy, red blood cell in loose and widen subendothelial space. TEM

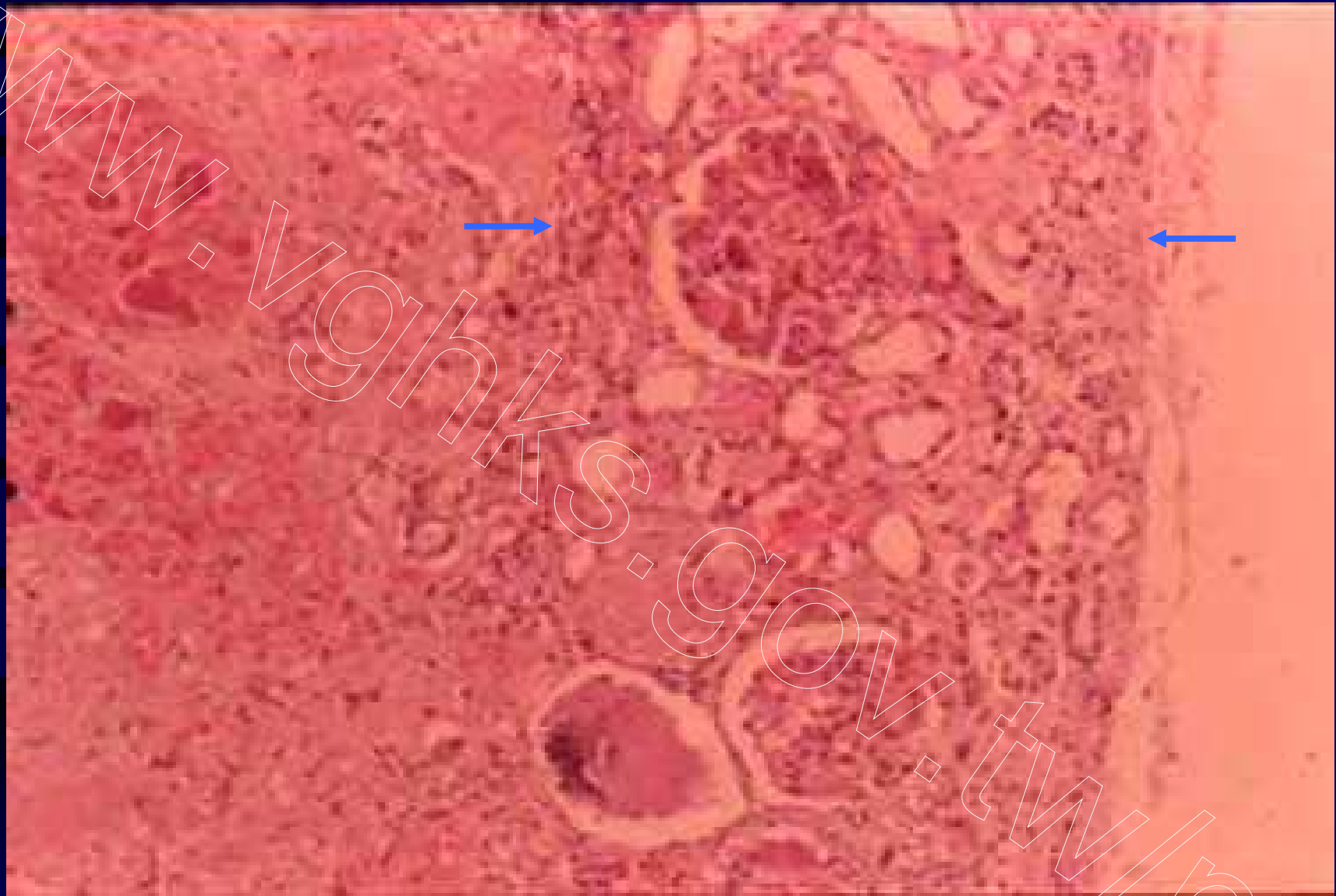


Fig 97. Cortical infarct, with relatively intact subcapsular zone. H&E



**Fig 98. Cortical infarct, tubular and glomerular “shadow”.
H&E**

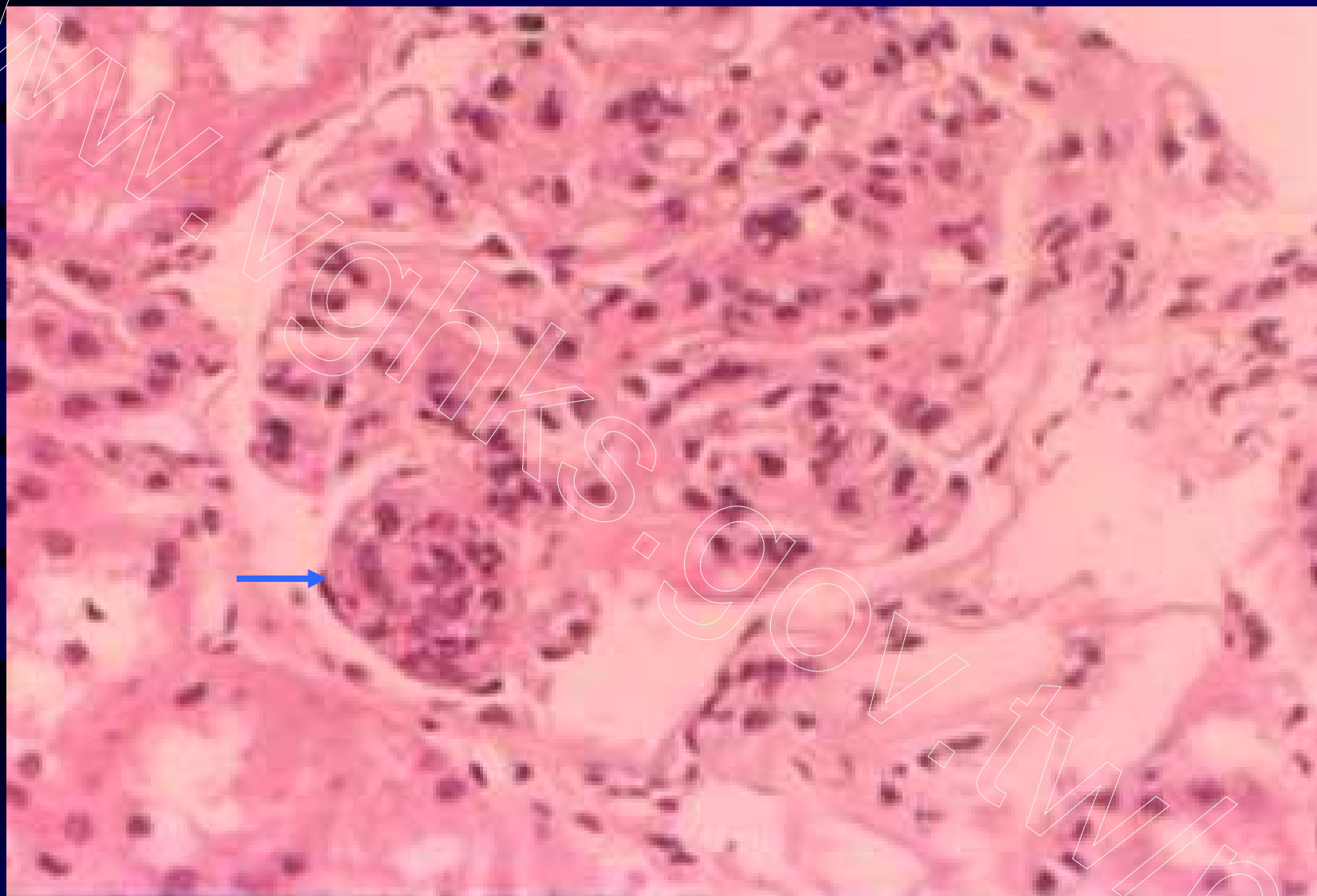


Fig 99. Microscopic polyangiitis (microscopic polyarteritis), with segmental necrotizing lesion. H&E